

*Applying to Oxbridge
(for 2025 Entry)*



Some Introductions...



Some Introductions...



- Tom McGachie
- Schools Liaison Officer at Emmanuel College
- Studied Modern & Medieval Languages
 - (French & Russian with Modern Greek)
- Trinity College 2018-2022



Why Oxbridge?

1) The Course



Why Oxbridge?

Anglo-Saxon, Norse, and Celtic, **Archaeology** Architecture **Asian and Middle Eastern Studies** Chemical Engineering and Biotechnology **Classics** Computer Science **Economics** Education **Engineering** English **Foundation Year in Arts, Humanities and Social Sciences** (pre-degree course) Geography **History** History and Modern Languages **History and Politics** History of Art **Human, Social, and Political Sciences** Law **Land Economy** Law Linguistics **Management Studies** (Part II course) Manufacturing Engineering (Part II course) **Mathematics** Medicine **Modern and Medieval Languages** Music **Natural Sciences** Philosophy **Psychological and Behavioural Sciences** Theology, Religion, and Philosophy of Religion **Veterinary Medicine**

Why Oxbridge?

2) The Reputation

Why Oxbridge?



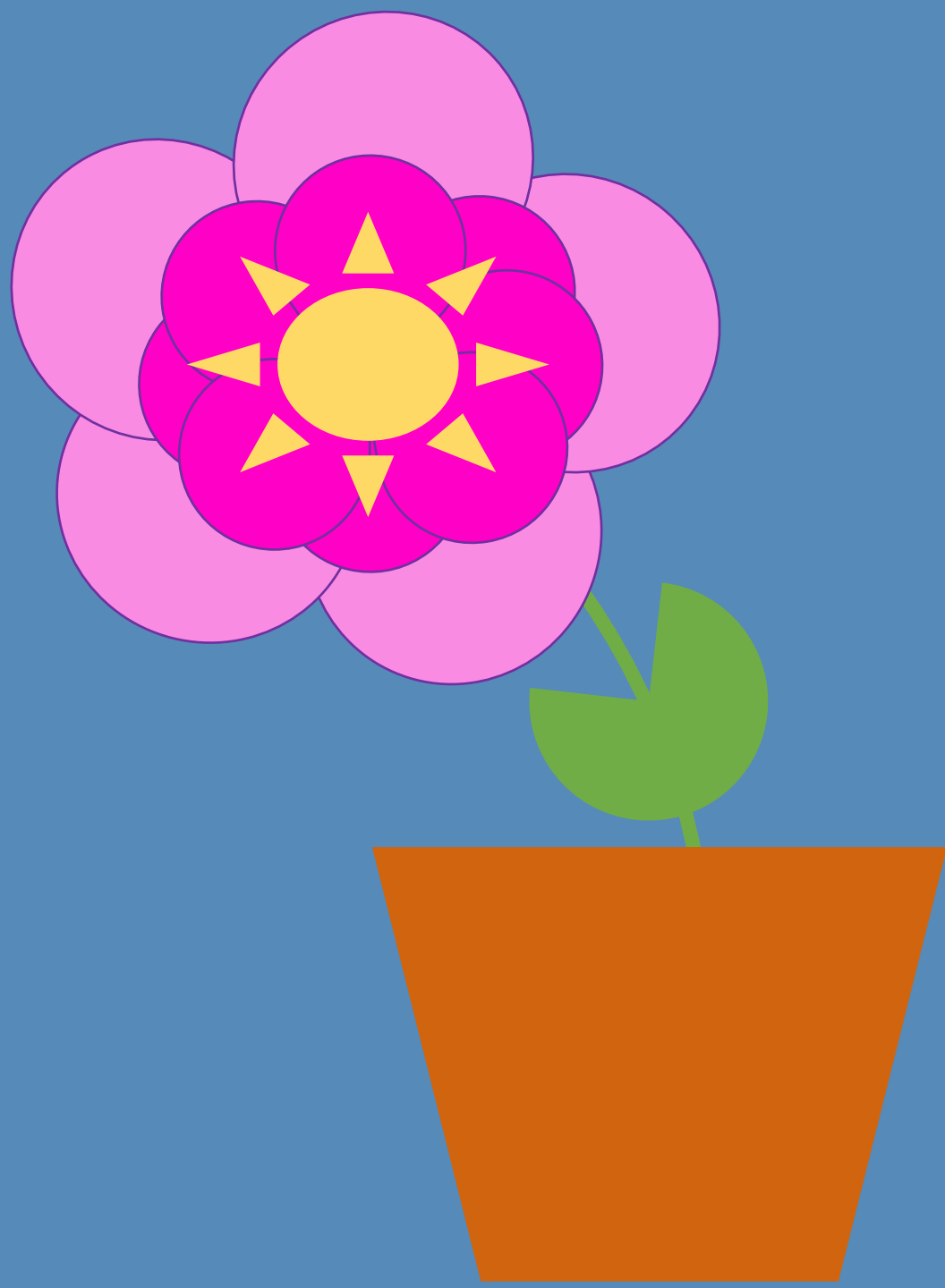
2

1

3

Why Oxbridge?

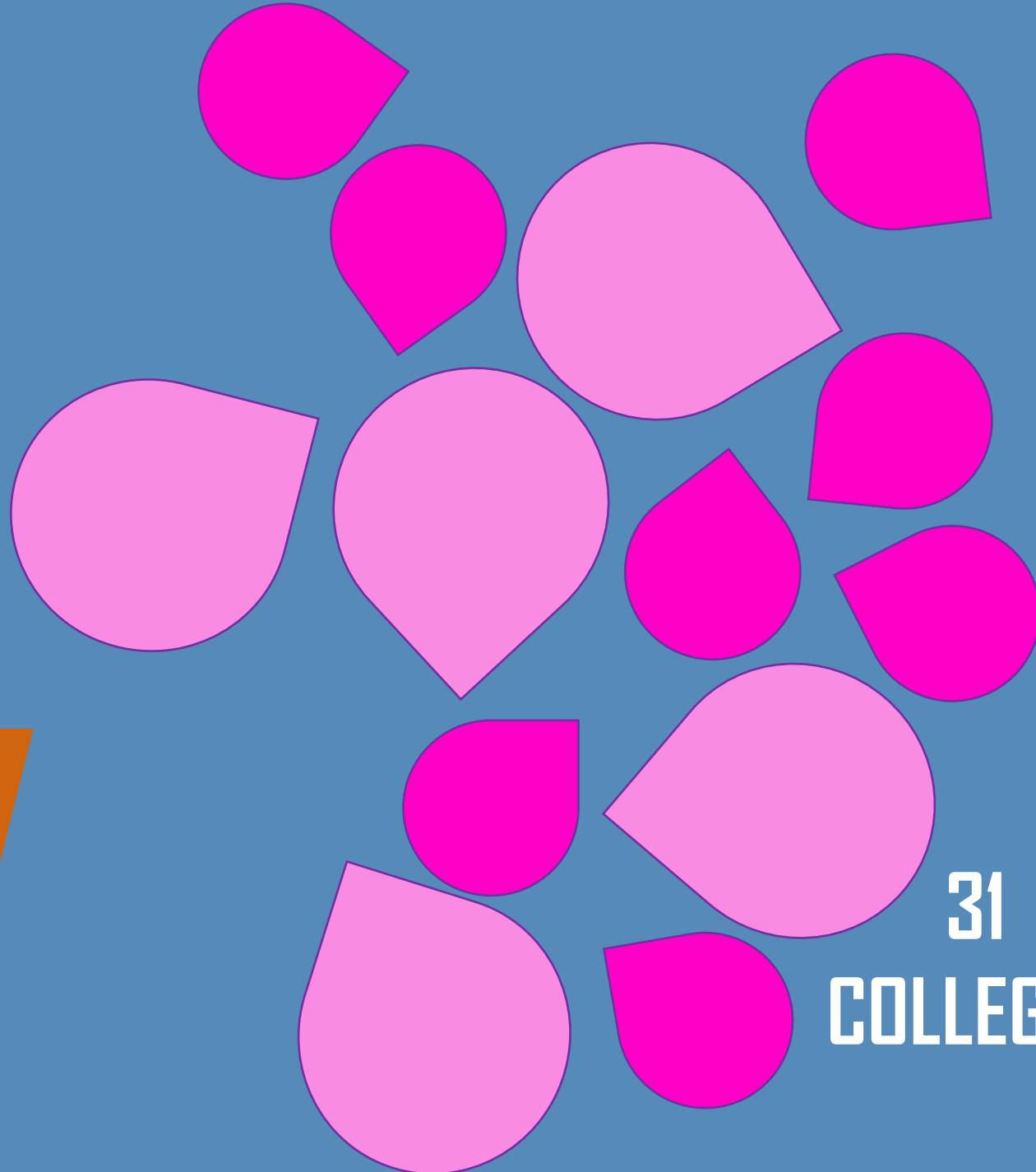
3) The Structure



STUDENTS



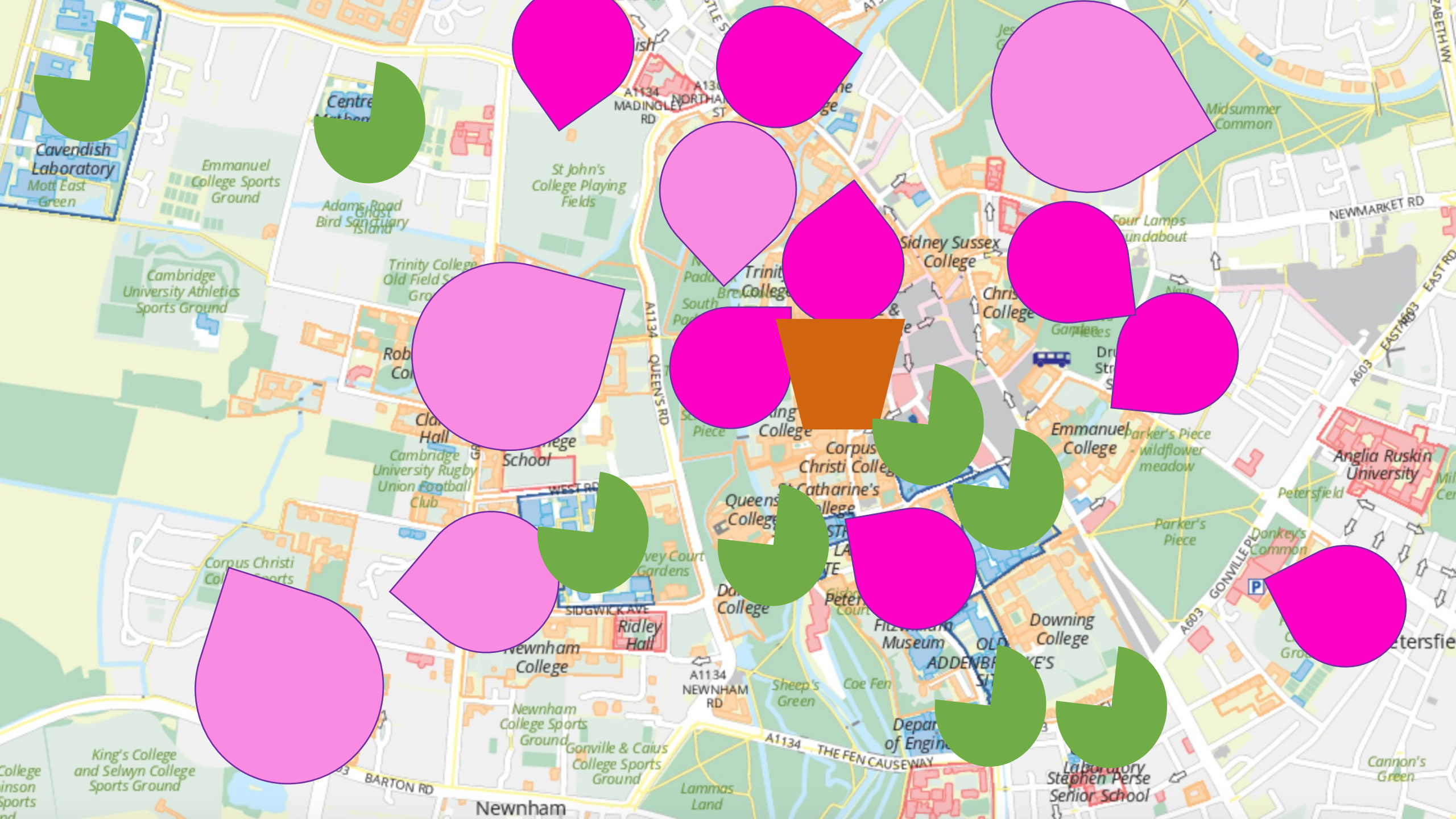
**FACULTIES &
DEPARTMENTS**



**31
COLLEGES**

**CENTRAL
UNIVERSITY**





Cavendish Laboratory

Emmanuel College Sports Ground

Centre for Mathematics

Adams Road Bird Sanctuary

Cambridge University Athletics Sports Ground

Trinity College Old Field Sports Ground

St John's College Playing Fields

A1134 MADINGLEY RD

A1134 NORTHAMPTON ST

Trinity College

Sidney Sussex College

Christy College

Four Lamps Roundabout

NEWMARKET RD

EAST RD

Robt College

Clare Hall

Cambridge University Rugby Union Football Club

A1134 QUEEN'S RD

Trinity College

Corpus Christi College

Emmanuel College

Anglia Ruskin University

Corpus Christi College Sports Ground

Queens' College

Queens' College

Queens' College

Catharine's College

Emmanuel College

Parker's Piece

Petersfield

Petersfield

King's College and Selwyn College Sports Ground

BARTON RD

Newnham

Newnham College Sports Ground

Gonville & Caius College Sports Ground

Lammas Land

A1134 NEWNHAM RD

Sheep's Green

A1134 THE FEN CAUSEWAY

Downing College

Downing College

Downing College

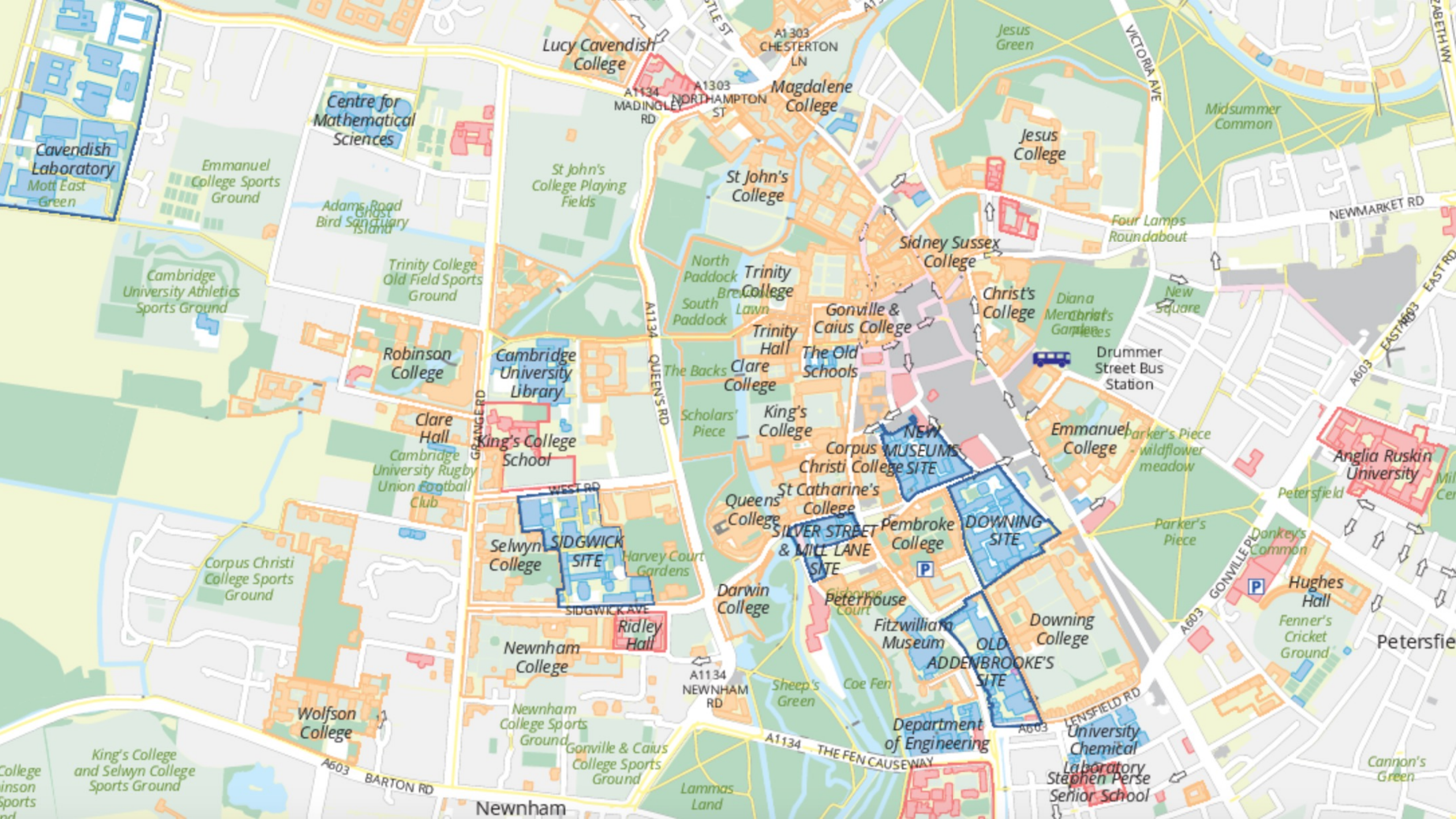
Stephen Perse Senior School

Parker's Piece

Donkey's Common

GONVILLE PL

Cannon's Green



Cavendish Laboratory
Mott East Green

Centre for Mathematical Sciences

Lucy Cavendish College

Magdalene College

Jesus College

St John's College

St John's College Playing Fields

Sidney Sussex College

Four Lamps Roundabout

Cambridge University Athletics Sports Ground

Trinity College Old Field Sports Ground

North Paddock
South Paddock

Trinity College

Gonville & Caius College

Christ's College

Diana Merabrial's Gardens

Drummer Street Bus Station

Robinson College

Cambridge University Library

The Old Schools

Trinity Hall
Clare College

Clare Hall

King's College School

Scholars' Piece

King's College

NEW MUSEUMS SITE

Emmanuel College

Parker's Piece wildflower meadow

Anglia Ruskin University

Cambridge University Rugby Union Football Club

Selwyn College

SIDGWICK SITE

Harvey Court Gardens

Queens College

St Catharine's College

SILVER STREET & MILL LANE SITE

Pembroke College

DOWNING SITE

Parker's Piece

Donkey's Common

Corpus Christi College Sports Ground

Selwyn College

Ridley Hall

Darwin College

Peterhouse

Fitzwilliam Museum

OLD ADDENBROOKE'S SITE

Downing College

Hughes Hall

Fenner's Cricket Ground

Wolfson College

Newnham College

Newnham College Sports Ground

Gonville & Caius College Sports Ground

Lammas Land

A1134 NEWNHAM RD

Sheep's Green

Coe Fen

Department of Engineering

University Chemical Laboratory

Stephen Perse Senior School

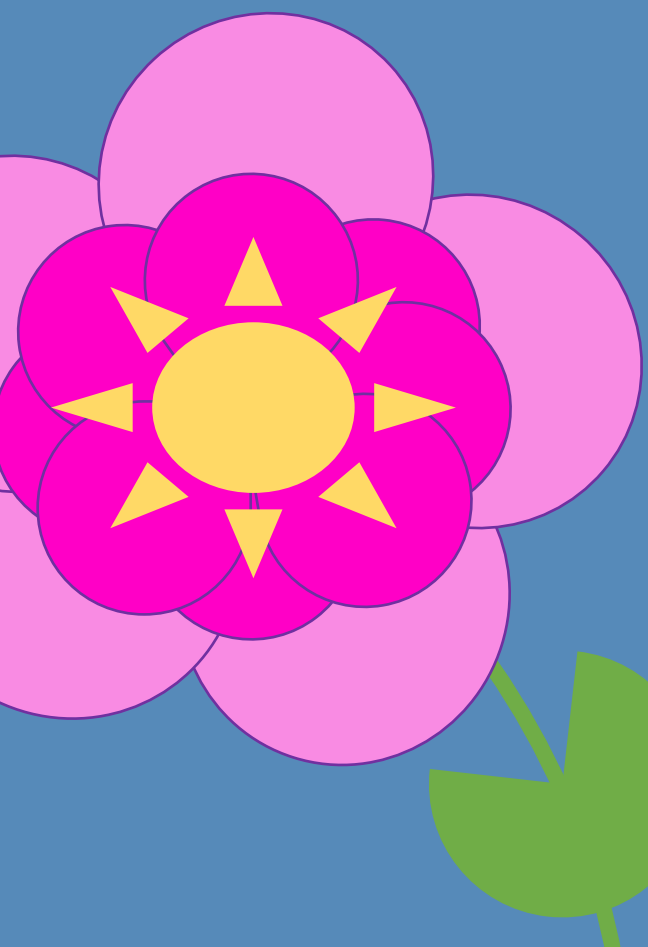
A603 BARTON RD

Newnham

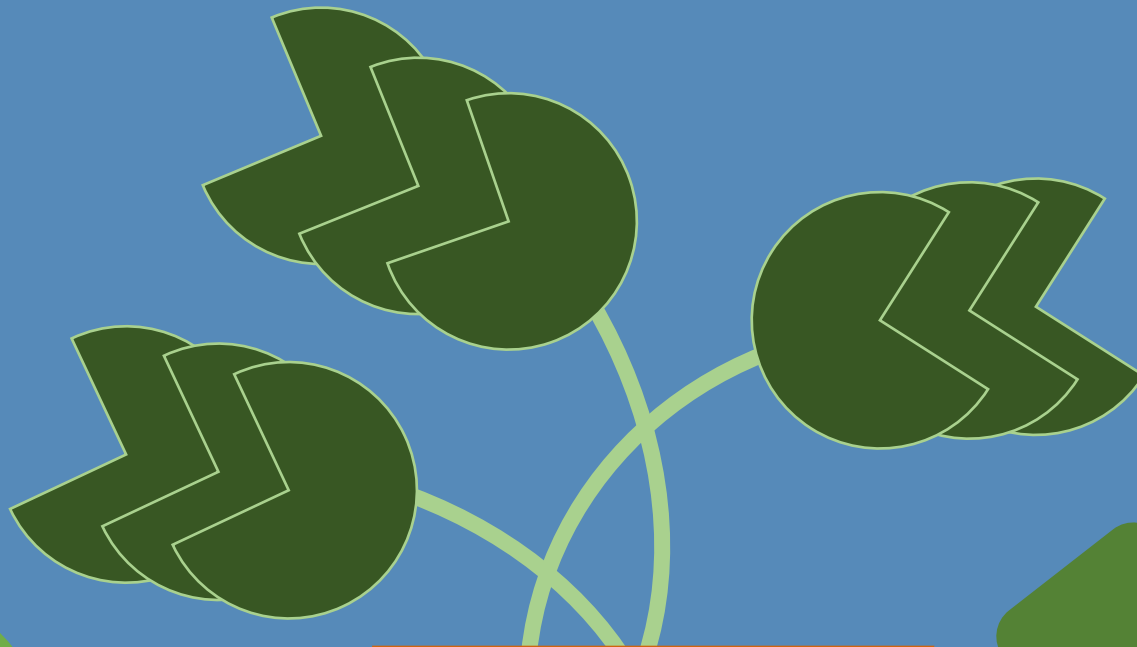
A1134 THE FEN CAUSEWAY

A603 LENSFIELD RD

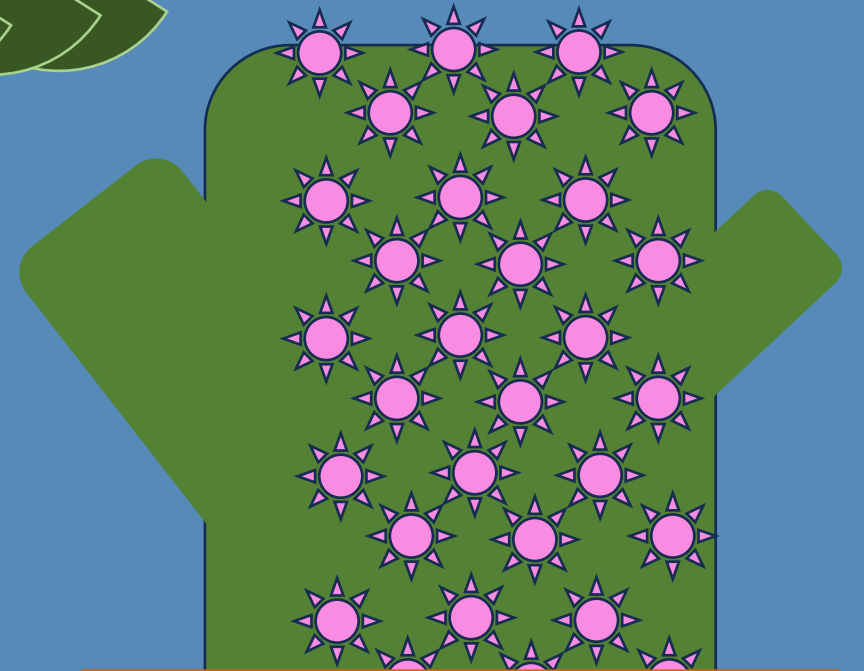
Cannon's Green



COLLEGIATE



**C
I
T
Y**



CAMPUS

Application Process



Application Process



SUMMER

- Open Days
- Pick Oxford OR Cambridge
- Pick your course
- Pick your College
- Consolidate your supercurriculars
- Get writing your Personal Statement

Application Process



SEPTEMBER

- Register for any pre-interview assessments (check online)
- Finalise application in advance of your school deadline

Application Process



OCTOBER

- Submit your UCAS form by the deadline (6pm, 15th October)
- Sit pre-interview assessments
- Submit an SAQ (now MyCambridge Application) and Written Work where relevant

Application Process



NOVEMBER

- Some further pre-interview assessments take place
- Offers for interview go out

Application Process



DECEMBER

- Attend Interview(s)
(usually beginning-mid
December)
- Sit any at-interview
assessments

Application Process



JANUARY

-Keep an eye on your inbox!

Application Process



AUGUST

- Results Day!
- August Reconsideration Pool

OCTOBER

- Submit your UCAS form by the deadline (6pm, 15th October)
- Sit pre-interview assessments
- Submit an SAQ and Written Work where relevant

SEPTEMBER

- Register for any pre-interview assessments (check online)
- Finalise application in advance of your school deadline

DECEMBER

- Attend Interview(s) (usually beginning-mid December)
- Sit any at-interview assessments

JANUARY

- Keep an eye on your inbox!

NOVEMBER

- Some further pre-interview assessments take place
- Offers for interview go out

AUGUST

- Results Day!
 - August Reconsideration Pool

Making a Competitive Application

Making a Competitive Application

**DEVELOP ORACY
SKILLS**

**KEEP YOUR
PERSONAL
STATEMENT
ACADEMIC**

**RESEARCH
RESEARCH
RESEARCH**

**EXPLORE
YOUR
SUBJECT(S)**

**START
EARLY**

**WRITE
DOWN
KEY DATES**

Making a Competitive Application

DEVELOP ORACY SKILLS	GET	THE
KEEP YOUR PERSONAL STATEMENT ACADEMIC	RESEARCH RESEARCH RESEARCH	GRADES
EXPLORE YOUR SUBJECT(S)	START EARLY	WRITE DOWN KEY DATES

Instagram: @emmanuelcollegeoutreach

Email: outreach@emma.cam.ac.uk

